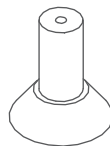
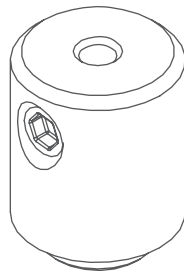


**Parts needed to mount the DP fastener**

Head (C)

Plastic base (B)

Plastic screw (A)

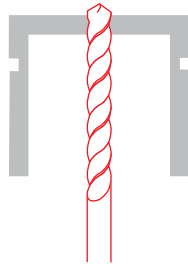


**Tools needed for mounting:**

- drill
- Allen wrench

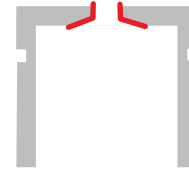
**NOTE!** A list of products corresponding with the selected accessories is available at [www.klusdesign.eu/uk](http://www.klusdesign.eu/uk).

**1.** Drill a hole with a diameter of 5 mm in the selected extrusion.

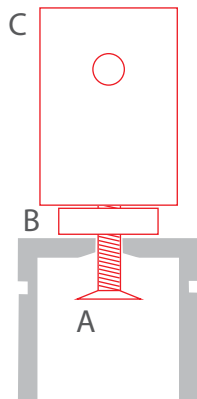


Fi 5 mm

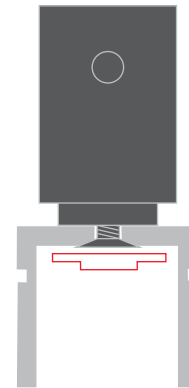
**2.** Bevel the hole so that the plastic screw head fits in.



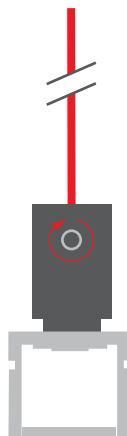
**3.** Mount the plastic screw (A), on the top of it mount the assembled plastic base (B) and head (C).



**4.** Mount the LED strip.



**5.** Insert the rod into the mounting bracket of the head. Block the rod by tightening the pressure screw in the head with the Allen wrench.



**6.** Suspend the lighting fixture using a chosen system.

