



Light efficiency:

117 Lumen/Watt

Light quality:

CRI: 98,0

Color temperature:

4174 K

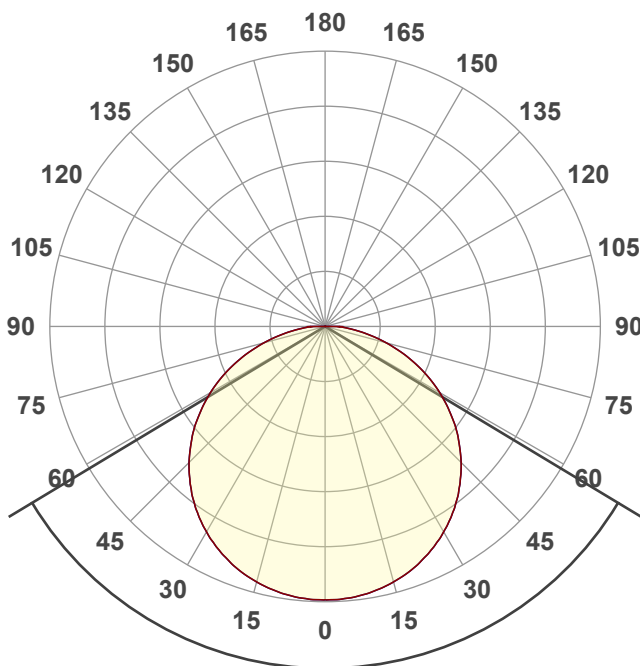
Output: 1825 lm

Peak: 592 cd

Power: 15,6 W

24,0V @ 0,650A

6 PLANES



Beam angle

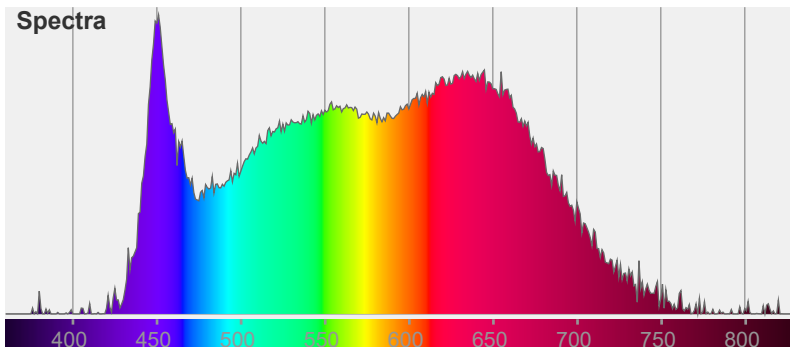
117,9°

Color



CIE1931
x: 0,373
y: 0,370

Spectra



Product name:

037812 RT-A160-5mm 24V

Day4000 (15 W_m, IP20, 2835, 5m)

Date and time:

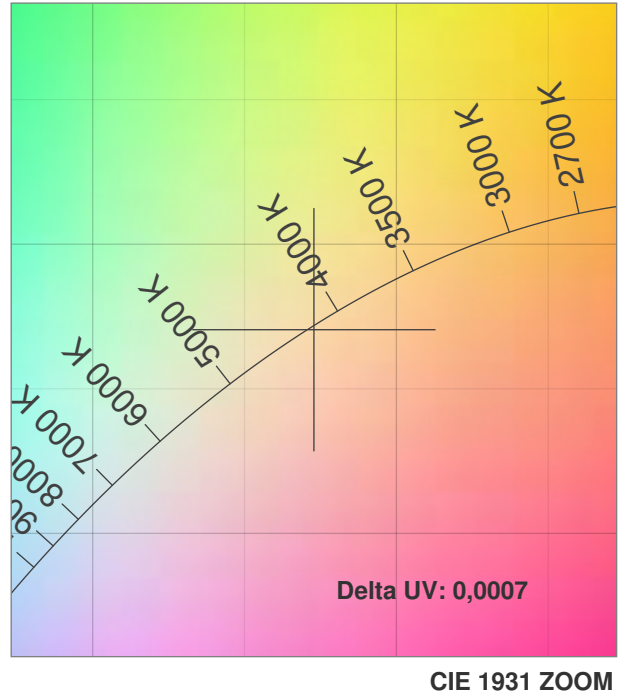
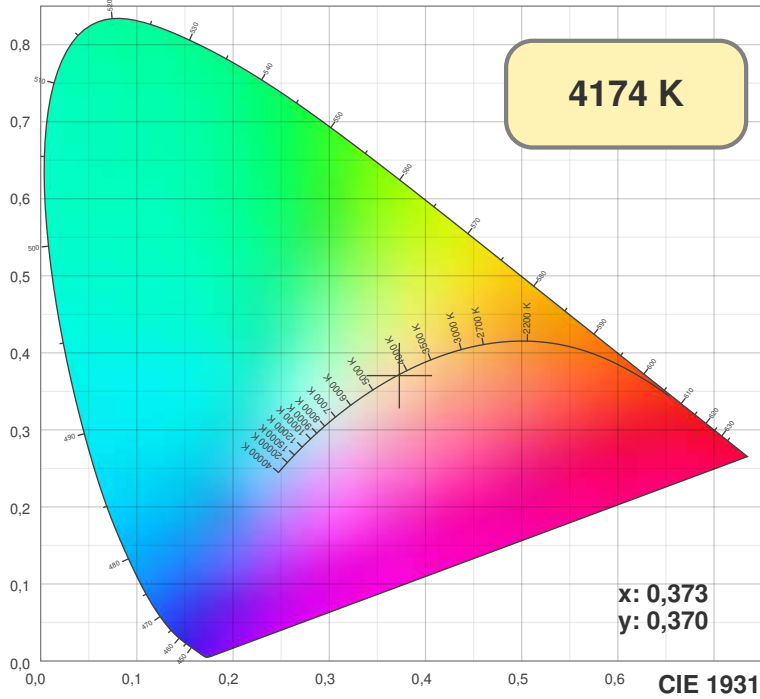
28.09.2022 16:41:41

Item number:

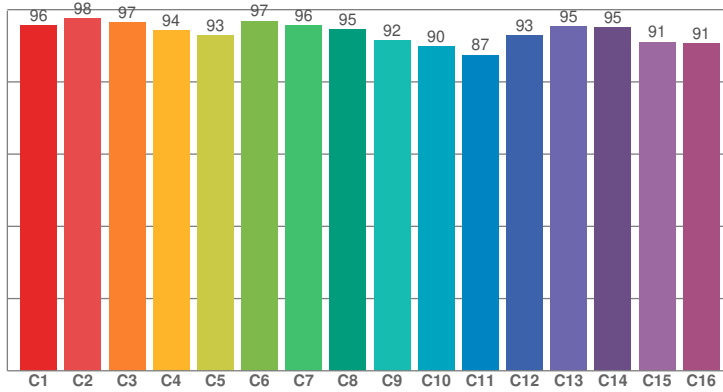
037812

Additional information:

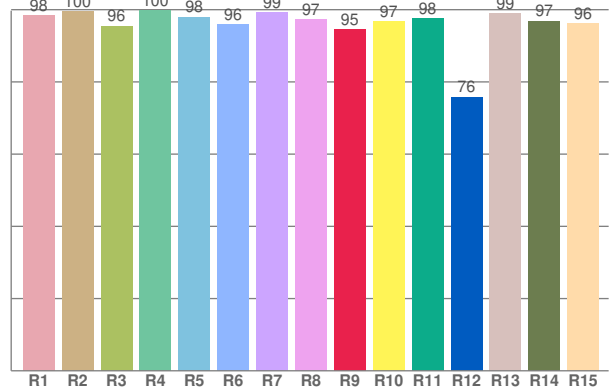
Engineer: Cherepnev Alex



TM30: 93,4



CRI: 98,0 (R1-R8)



CRI R values, only R1-R8 are used to calculate final CRI value

R1	R2	R3	R4	R5	R6	R7	R8	R9	R10	R11	R12	R13	R14	R15
98,42	99,53	95,52	99,78	98,02	95,91	99,17	97,39	94,63	96,79	97,66	75,85	98,94	96,89	96,16

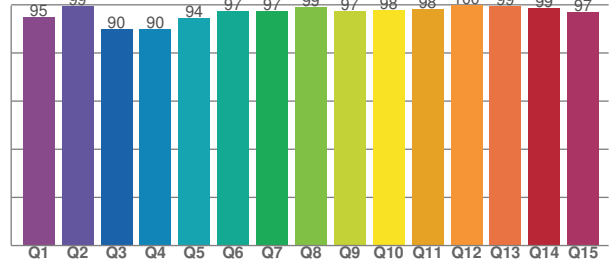
TM30 C values, 16 binned values out of total of 99 C values

C1	C2	C3	C4	C5	C6	C7	C8	C9	C10	C11	C12	C13	C14	C15	C16
95,64	97,60	96,54	94,27	92,89	96,87	95,58	94,62	91,51	89,85	87,46	92,96	95,27	95,12	91,06	90,67

CQS Q values

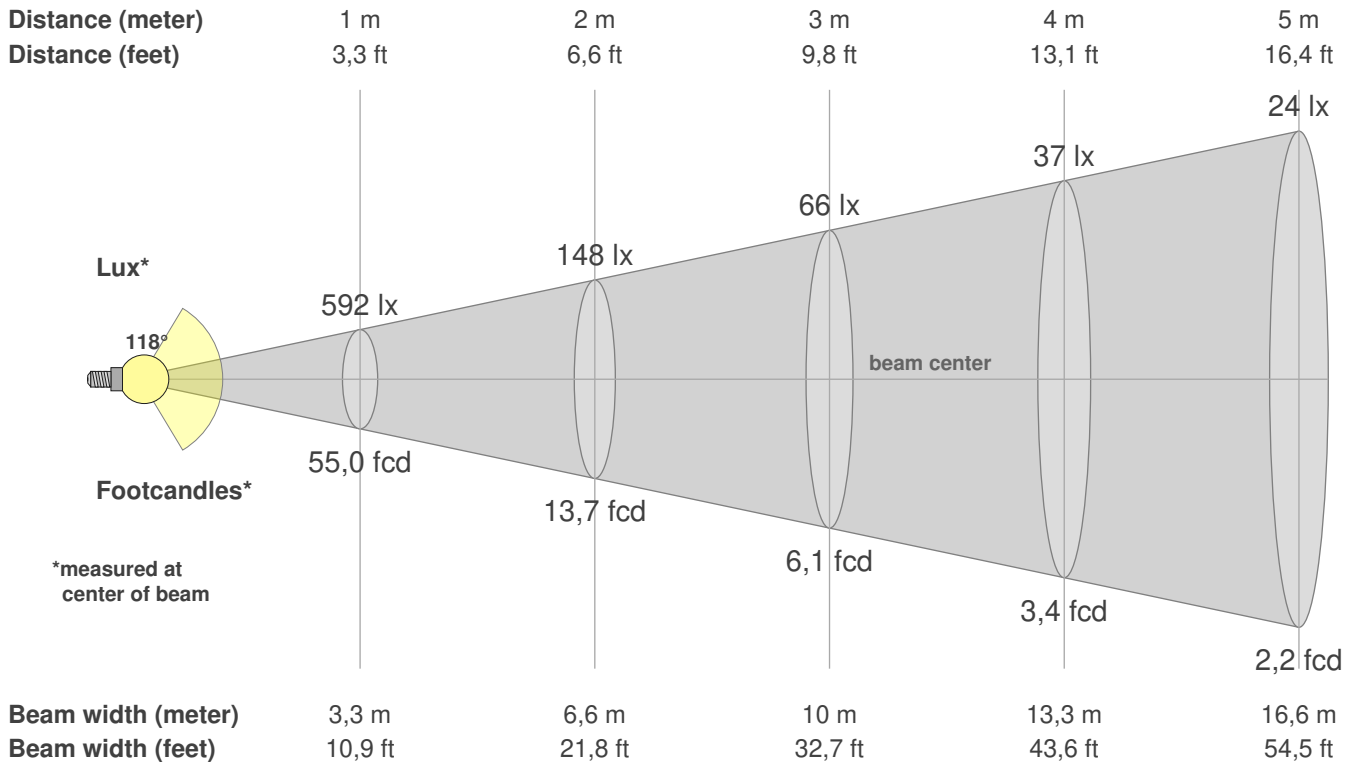
Q1	Q2	Q3	Q4	Q5	Q6	Q7	Q8	Q9	Q10	Q11	Q12	Q13	Q14	Q15
94,84	99,46	90,01	89,96	94,48	97,32	97,49	99,18	97,49	97,92	98,20	99,72	99,32	98,77	97,09

CQS: 95,6



Color parameters

CCT	CRI	CRI R9	TM30 Rf	TM30 Rg	CQS	x	y	u	v	Duv
4174 K	98,0	94,6	93,4	100,7	95,6	0,4	0,4	0,2	0,3	-0,0007


Intensities in 0° c-plane

0°	5°	10°	15°	20°	25°	30°	35°	40°	45°	50°	55°	60°	65°	70°	75°	80°	85°	90°	95°
592	590	583	572	557	537	513	485	452	416	376	332	286	238	187	137	90	52	10	0
100%	100%	99%	97%	94%	91%	87%	82%	76%	70%	64%	56%	48%	40%	32%	23%	15%	9%	2%	0%

Intensities in 90° c-plane

0°	5°	10°	15°	20°	25°	30°	35°	40°	45°	50°	55°	60°	65°	70°	75°	80°	85°	90°	95°
592	590	583	572	557	537	513	485	452	416	376	332	286	238	187	137	90	52	10	0
100%	100%	99%	97%	94%	91%	87%	82%	76%	70%	64%	56%	48%	40%	32%	23%	15%	9%	2%	0%

Intensities in 180° c-plane

0°	5°	10°	15°	20°	25°	30°	35°	40°	45°	50°	55°	60°	65°	70°	75°	80°	85°	90°	95°
592	590	583	572	557	537	513	485	452	416	376	332	286	238	187	137	90	52	10	0
100%	100%	99%	97%	94%	91%	87%	82%	76%	70%	64%	56%	48%	40%	32%	23%	15%	9%	2%	0%

Intensities in 270° c-plane

0°	5°	10°	15°	20°	25°	30°	35°	40°	45°	50°	55°	60°	65°	70°	75°	80°	85°	90°	95°
592	590	583	572	557	537	513	485	452	416	376	332	286	238	187	137	90	52	10	0
100%	100%	99%	97%	94%	91%	87%	82%	76%	70%	64%	56%	48%	40%	32%	23%	15%	9%	2%	0%

Beam angle 50%	Field angle 10%	Cutoff angle 2,5%	Intensity ratio in 120° cone	Intensity ratio in 90° cone
117,9°	167,8°	179,9°	76,0%	50,9%